

RESEARCH

Open Access

Ambient temperature and coronary heart disease mortality in Beijing, China: a time series study

Zhaoxing Tian^{1*}, Shanshan Li², Jinliang Zhang³, Jouni J K Jaakkola⁴ and Yuming Guo^{5,6*}

Abstract

Background: Many studies have examined the association between ambient temperature and mortality. However, less evidence is available on the temperature effects on coronary heart disease (CHD) mortality, especially in China. In this study, we examined the relationship between ambient temperature and CHD mortality in Beijing, China during 2000 to 2011. In addition, we compared time series and time-stratified case-crossover models for the non-linear effects of temperature.

Methods: We examined the effects of temperature on CHD mortality using both time series and time-stratified case-crossover models. We also assessed the effects of temperature on CHD mortality by subgroups: gender (female and male) and age (age ≥ 65 and age < 65). We used a distributed lag non-linear model to examine the non-linear effects of temperature on CHD mortality up to 15 lag days. We used Akaike information criterion to assess the model fit for the two designs.

Results: The time series models had a better model fit than time-stratified case-crossover models. Both designs showed that the relationships between temperature and group-specific CHD mortality were non-linear. Extreme cold and hot temperatures significantly increased the risk of CHD mortality. Hot effects were acute and short-term, while cold effects were delayed by two days and lasted for five days. The old people and women were more sensitive to extreme cold and hot temperatures than young and men.

Conclusions: This study suggests that time series models performed better than time-stratified case-crossover models according to the model fit, even though they produced similar non-linear effects of temperature on CHD mortality. In addition, our findings indicate that extreme cold and hot temperatures increase the risk of CHD mortality in Beijing, China, particularly for women and old people.

Keywords: Ambient temperature, Coronary heart disease, Mortality, Cold effect, Hot effect, Gender, Age

Background

There is strong evidence that extreme temperatures (e.g., cold spells and heat waves) have significant impacts on health [1,2]. Studies have shown that vulnerable people (e.g., elderly, children, and people with chronic diseases) will be affected greatly by extreme temperatures [3]. Coronary heart disease (CHD) patients constitute one of the largest groups of susceptible people [4-6]. As the second leading cause of cardiovascular death in the Chinese population, CHD accounts for 22% of cardiovascular deaths in urban areas and 13% in rural areas in

China [7]. There is evidence that the incidence of CHD is steadily increasing in China [8], but there is a gap in the knowledge about the effects of temperature on CHD mortality applicable for the Chinese population.

Season and long-term trends are considered as confounders in examining short-term effects of temperature on mortality. Time series models with a smooth function for time are commonly used to control for season and long-term trends [9-12]. The case-crossover study is an alternative design where seasonal effects and secular trends are taken into account by comparing exposure on a period shortly prior to or after the onset (hazard period) to reference periods in relatively small time windows (e.g., calendar month) [13,14]. This adjusts for season using a step-function rather than the smooth function used by time series [15]. Both methods have

* Correspondence: tjtzx@126.com; ymguo@yahoo.cn

¹Emergency Department of Peking University Third Hospital, Beijing, China

⁵School of Public Health and Social Work, Queensland University of Technology, Brisbane, Australia

Full list of author information is available at the end of the article

been used in estimating non-linear relations between temperature and mortality, but the two analytical approaches have not been compared in distributed lag non-linear models. Our objective was to assess the non-linear relations between temperature and CHD mortality using both time-series and time-stratified case-crossover analyses.

Methods

Data collection

Data on the daily numbers of deaths from CHDs and weather conditions were collected from urban areas in Beijing, China. Beijing is located in northern China, and has four distinct seasons, with cold, windy, dry winters, and hot, humid summers.

Data on the daily counts of death from CHDs were retrieved from the Death Classification System, Beijing Public Security Bureau from January 1, 2000 to December 31, 2011. We classified CHD mortality according to the International Classification of Diseases, 10th revision (ICD-10: I20–I25). We stratified the deaths into groups by gender (women and men) and age (age \geq 65 and age $<$ 65).

We acquired meteorological data on daily mean temperature and relative humidity from the China Meteorological Data Sharing Service System. The data was monitored at a single monitoring station which is located at Daxing District (N39°48' E116°28') in the south eastern part of Beijing. There was no missing data for temperature and relative humidity. The reason why we used only one monitoring station's temperature is that an unpublished study (Yuming Guo, in revision by Environmental Research) shows that time series model using one monitoring station's temperature is equal to spatiotemporal model using spatial temperatures for assessing city-wide temperature effects on mortality.

Data analysis

Time series analysis

We used a time series regression to examine the group-specific temperature-mortality relationship. We allowed for over-dispersion in CHD deaths using a quasi-Poisson function [16]. Many studies have reported that the temperature-mortality association is non-linear and might be delayed in time. Both cold and hot temperatures increase the risk of mortality, and they not only increase the risk of mortality on the current day, but also on several following days [17]. The lag days was fixed at 15 days, as most studies have shown that the association between cold temperature and mortality can last for weeks, while the association between hot temperature and mortality is usually acute with some mortality displacement [18]. Thus, we applied a distributed lag non-linear model (DLNM), by which the non-linear and

delayed associations were modeled. We used a DLNM with 5 degrees of freedom natural cubic for temperature and with 4 degrees of freedom natural cubic for lags [19,20].

The time series model used a natural cubic spline with 7 degrees of freedom per year for time to control for seasonal pattern and long-term trend. We controlled for day of the week as an indicator variable. We controlled for relative humidity using the same DLNM as temperature.

Time-stratified case-crossover analysis

As an alternative, time-stratified case-crossover model was used to examine the group-specific temperature-mortality relationship. Time-stratified case-crossover model has been widely used to assess the effects of temperature (or air pollution) on mortality [21,22]. The case-crossover design is a special case of matched case-control study [23]; each case in the case-crossover study is used as their control. For the time series data on deaths and temperature, the case-crossover design compares temperatures on a hazard day prior to or after the onset of the event of interest (e.g., deaths) with temperatures on nearby reference days to examine whether the events are associated with temperature. Because reference days are selected close to the hazard days, seasonality is controlled by design [24,25]. The time-stratified case-crossover uses fixed and disjointed time strata (e.g., calendar month), so the overlap bias is avoided [26].

The conditional logistic regression used in case-crossover analysis is a special case of Poisson regression model [27,28]. Hence, we used a Poisson regression model with quasi-Poisson function to fit the time-stratified case-crossover design. We used calendar month as strata. For each death, the deceasing day was defined as "hazard day". The same days of the week in the same calendar month were selected as "reference days". Day of the week was controlled for by matching to avoid any potential confounding due to the strong weekly pattern in mortality. The same DLNM was used for temperature as time series analysis. Also, we used the same function for relative humidity.

For both time series and time-stratified case-crossover analyses, we plotted the estimated relative risks for each group. We calculated the relative risks at specific temperatures: the relative risks of death associated with an extremely cold temperature (-7.6°C , 1st percentile of mean temperature) compared to 10th percentile of temperature (-2.2°C); and associated with an extremely hot temperature (30.5°C , 99th percentile of mean temperature) relative to 90th percentile of temperature (27.0°C). These effect estimates were taken from the nonlinear temperature-mortality curves, so they reflect a portion of the true exposure-response curves [17].

Table 1 Summary statistics for coronary heart disease mortality and weather condition in Beijing, China during 2000 to 2011

group	1%	10%	25%	50%	75%	90%	99%	Mean	SD ^a
All	1	3	4	6	8	10	14	6	2.9
Male	0	1	2	4	6	7	11	4	2.3
Female	0	0	1	2	3	4	6	2	1.4
Age < 65	0	0	1	1	2	3	6	2	1.4
Age ≥ 65	0	2	3	4	6	8	11	4	2.4
Mean temperature (°C)	-7.6	-2.2	2.5	14.7	23.8	27	30.5	13.3	11.2
Relative humidity (%)	14	24	36	54	69	79	91	52.7	20.3

^a Standard deviation.

We used Akaike information criterion for quasi-Poisson (Q-AIC) to assess which design (time series or case-crossover models) performed better. Sensitivity analyses were performed by changing the maximum lag from 15 to 30 days, the degrees of freedom for temperature, relative humidity and lags (3 to 6) and degrees of freedom (6 to 10 per year) for time in time series models. We also changed strata length (from 21 to 42 days) for time-stratified case-crossover models. All statistical tests were two-sided and *p*-values of less than 0.05 were considered statistically significant. The R software (version 2.15.0, R Development Core Team 2009)

was used to fit all models, with the “dlnm” package to create the DLNM [20].

Results

There were totally 26,460 CHD deaths in Beijing, China during 2000 to 2011, including 18,250 men and 19,358 people aged ≥ 65 years. Table 1 shows the statistical summary for CHD mortality, mean temperature and relative humidity. The daily mean CHD mortality was 6, mean temperature 13.3°C, and relative humidity 52.7%.

Figure 1 shows the time series of the CHD mortality and temperature in Beijing, China between 2000 and 2011. In general, there was a seasonal trend of CHD death, with higher mortality in winter than summer. There was a clear seasonal pattern for temperature.

Figure 2 shows the non-linear relations between temperature and group-specific CHD mortality using both time series and case-crossover analyses. The two models gave similar group-specific temperature-mortality relations. Both extreme cold and hot temperatures increased the risk of CHD mortality in all groups.

Table 2 Shows the effects of extreme cold and hot temperatures on CHD mortality by group, using both time series and case-crossover analyses. The case-crossover models produced higher effect estimates than time series models. However, time series models could be better to

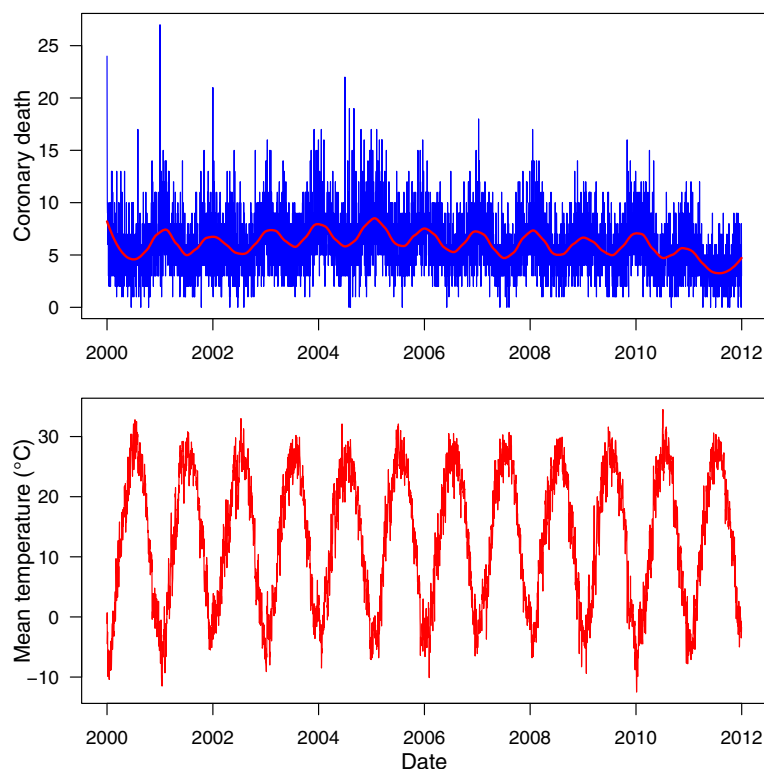


Figure 1 The time series of coronary heart disease mortality and mean temperature in Beijing, China during 2000 to 2011.

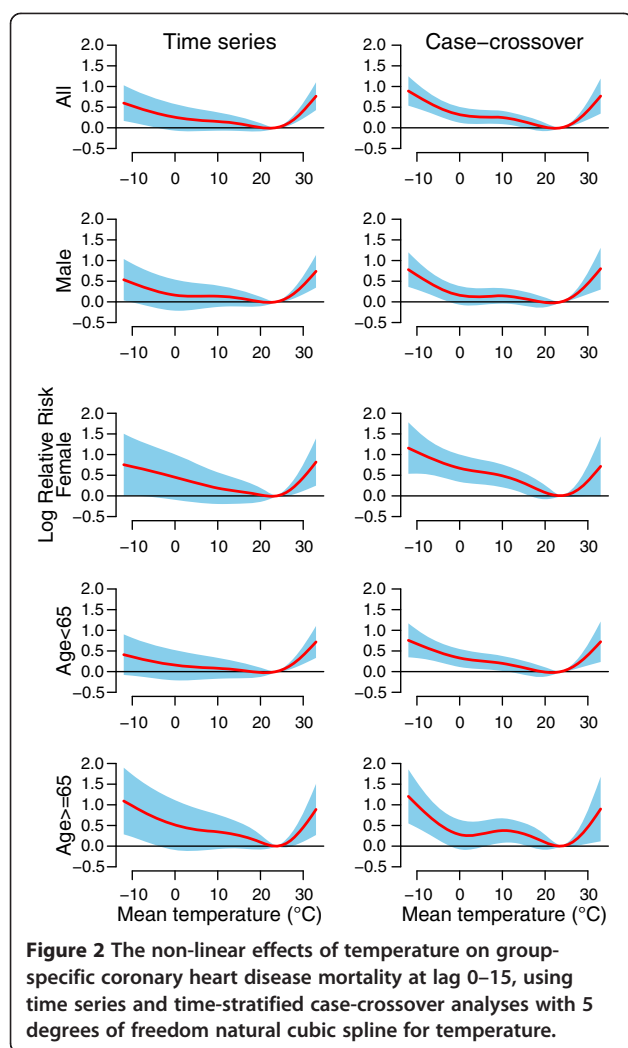


Figure 2 The non-linear effects of temperature on group-specific coronary heart disease mortality at lag 0–15, using time series and time-stratified case-crossover analyses with 5 degrees of freedom natural cubic spline for temperature.

fit the data than case-crossover models (Table 3). Time series analyses show that the elderly and women were more sensitive to extreme cold and hot temperatures than young and men; the overall cold effect (-7.6°C versus -2.2°C) in CHD mortality risk was 1.16 (95% confidence interval: 1.04, 1.30); the overall hot effect (30.5°C versus 27.0°C) in CHD mortality risk was 1.38 (1.20, 1.60).

We plotted the lag structures for hot effects (Figure 3) and cold effects (Figure 4) up to 15 days. Figure 3 shows that the hot effects on all groups of CHD mortality were acute and short-term (lasted for 3 days). In general, cold effects were delayed by two days and lasted for five days (Figure 4). The change of lag from 15 to 30 days, and the degrees of freedom (3 to 6) for temperature, relative humidity and lags did not substantially influence the effect estimates. Time series models using degrees of freedom (6 to 10 per year) produced similar results as our results. Time-stratified case-crossover models using strata length (from 21 to 42 days) still gave similar estimates as our findings.

Discussion

To our best knowledge, this is the first study to examine the effects of ambient temperature on CHD mortality in Beijing, China. This is also the first study using both time series and case-crossover models to examine the non-linear association between temperature and CHD mortality. Both models show that extreme cold and hot temperatures increased the risk of CHD mortality, but time series models performed better than case-crossover models to fit the data. The old people and women were more sensitive to extreme hot and cold temperatures than the young and men respectively.

Our results are consistent with previous findings. Kunst et al. [29] reported that the high CHD mortality in cold weather were largely attributable to exposure to cold temperatures, after controlling for the influences of influenza, air pollution and season. Danet et al. [30] found that the cold effects increased the risk of both CHD morbidity and mortality, with stronger effects in old people. Other studies reported that hot temperatures were associated with the high rates of CHD deaths [31,32]. Exposure to extreme hot temperatures induced an acute event in people with myocardial infarction or stroke [33].

We investigated both hot and cold effects over 15 days on CHD mortality. The hot effects were acute and short-term. Studies have shown that hot temperatures induce an acute event in people with myocardial infarction or stroke [33]. In general, cold effects were delayed and lasted about 5 days after the extreme cold days.

Table 2 The effects of extreme cold and hot temperatures on group-specific mortality from coronary heart disease over lags 0–15, using time series and case-crossover analyses with 5 degrees of freedom natural cubic spline for temperature

Effects	group	Relative risk (95% CI)	
		Time series	Case-crossover
Cold effect ^a	All	1.16 (1.04, 1.30)*	1.29 (1.12, 1.48) *
	Male	1.15 (0.95, 1.39)	1.24 (0.97, 1.59) *
	Female	1.18 (1.03, 1.34) *	1.31 (1.11, 1.55) *
	Age < 65	1.12 (0.99, 1.27)	1.21 (1.02, 1.42) *
	Age > =65	1.29 (1.06, 1.58) *	1.49 (1.15, 1.93) *
Hot effect ^b	All	1.38 (1.20, 1.60) *	1.39 (1.15, 1.67) *
	Male	1.37 (1.16, 1.62) *	1.37 (0.99, 1.88)
	Female	1.42 (1.11, 1.81) *	1.40 (1.12, 1.75) *
	Age < 65	1.35 (1.15, 1.59) *	1.36 (1.09, 1.68) *
	Age > =65	1.47 (1.13, 1.91) *	1.48 (1.05, 2.08) *

* $P < 0.05$.

^a 1st percentile of temperature (-7.6°C) relative to 10th percentile of temperature (-2.2°C).

^b 99th percentile of temperature (30.5°C) relative to 90th percentile of temperature (27.0°C).

Table 3 Akaike information criteria for quasi-Poisson (Q-AIC) values for the relationship between temperature and group-specific coronary heart disease mortality using time series and case-crossover models, with 5 degrees of freedom natural cubic spline for temperature and 4 degrees of freedom natural cubic spline for lags

group	Q-AIC value	
	Time series	Case-crossover
All	20606.4	21534.3
Male	18629.8	19597.2
Female	14714.4	15532.1
Age < 65	13963.6	14915.0
Age > =65	18955.8	19810.3

Previous studies also reported similarly delayed cold effects on mortality [17].

No previous study has reported an association between temperature and CHD mortality in China. However

some studies have provided evidence that cold and hot temperatures are related to the increased risks of non-accidental, cardiovascular, and respiratory mortality in Beijing [34], Tianjin [18], and Shanghai [35].

Our findings are biologically plausible for several reasons. Exposure to extreme cold temperatures is associated with an increase in blood pressure, blood cholesterol, heart rate, plasma fibrinogen, platelet viscosity and peripheral vasoconstriction, [36,37]. Exposure to extreme hot temperatures might induce dehydration, salt depletion and increased surface blood circulation, which can lead to a failure of thermoregulation [38]. Extreme hot temperatures may also be related to elevated blood viscosity, cholesterol levels and sweating thresholds [39].

Almost all the studies have indicated that the elderly are more sensitive to the impact of ambient temperature than the young [40,41], regardless of time periods, regions and methods [42]. The reason might be that the

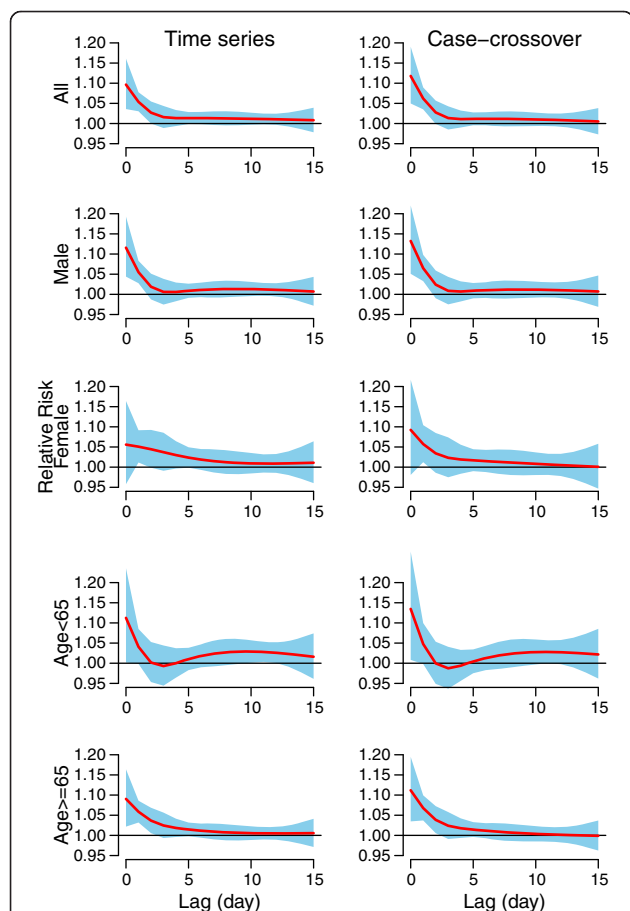


Figure 3 The estimated hot effects associated with 99th percentile temperature (30.5°C) relative to 90th percentile of temperature (27.0°C) on group-specific CHD mortality over 15 days of lag, using time series and time-stratified case-crossover models with 5 degrees of freedom natural cubic spline for temperature and 4 degrees of freedom natural cubic spline for lag.

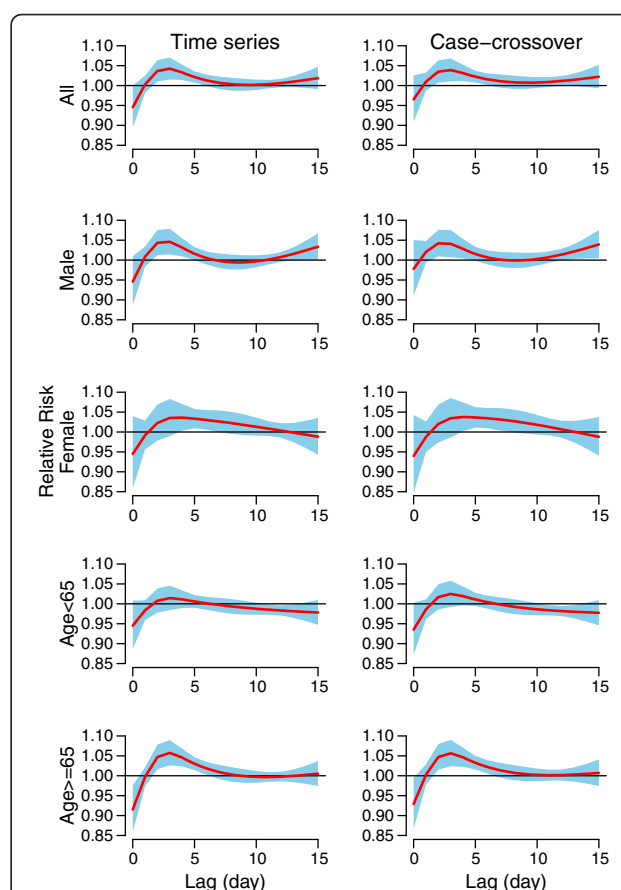


Figure 4 The estimated cold effects associated with 1st percentile of temperature (-7.6°C) relative to 10th percentile of temperature (-2.2°C) on group-specific CHD mortality over 15 days of lag, using time series and time-stratified case-crossover models with 5 degrees of freedom natural cubic spline for temperature and 4 degrees of freedom natural cubic spline for lag.

thermal regulation system weakens with aging, for example, skin sensory perception may diminish and thermal homeostasis may decline [43].

In this study, we found women to be more sensitive to extreme cold and hot temperatures than men in Beijing, China. There is evidence that women are more vulnerable to extreme cold and hot temperatures than men [44]. The reason might be that women have higher risks for ischemic, arrhythmic and blood pressure which are sensitive to the extreme hot and cold temperatures [45]. The other reason might be that women are older than men.

The time series and case–crossover analyses have been used widely to examine the effects of temperature (air pollution) on mortality in the past decade [24]. Many studies have compared these two models for the linear effects of temperature (or air pollution) on mortality, and results show that the two models are equal to examine the linear effects of temperature (or air pollution) on mortality [21,22,24]. This study confirmed that the time series and case-crossover models gave the similar non-linear effect estimates for the temperature-mortality relation, even though time series models performed better than case-crossover models as judged by model fit (Q-AIC).

There are some limitations in this study. We used monitoring site data in exposure assessment. This might introduce exposure misclassification bias (Berkson error). However, Berkson error may reduce the power of the study, but it does not attenuate the risk estimates. An unpublished study (Yuming Guo, in revision by Environmental Research) also reports that one monitoring station's temperature is enough to capture the city-wide temperature effects on mortality. We only used data from Beijing, China to examine the effects of temperature on CHD mortality, so the findings are difficult to generalize to other areas. Other studies in different countries using the same designs should be developed to confirm and detail the impacts of ambient temperature on CHD mortality. We did not control for air pollution, as these data were not available. However, some studies found that the temperature effects on mortality are robust after controlling for air pollution [17]. But future studies are still needed to look at this issue.

Conclusions

Both time series and time-stratified case-crossover analyses indicate that extremely cold and hot temperatures increase the risk of CHD mortality in Beijing, China. Time series models were better to fit the data than case-crossover models according to the model fit. The women and old people were more sensitive to extreme cold and hot temperatures than men and young. These findings

strongly suggest prevention of cold-/hot-related CHD event has a great public health potential. Adaptation measure such as appropriate heating and clothing in winter, using air conditioning in summer, as well as well-functioning alarm systems and emergency service could prevent substantial amount of CHD mortality. However, detailed studies are needed to identify and assess the most suitable adaptation measures for extreme cold and hot temperatures.

Abbreviations

CHD: Coronary heart disease; DLNM: Distributed lag non-linear model; ICD-10: International classification of diseases, 10th revision; Q-AIC: Akaike information criterion for quasi-Poisson.

Competing interests

The authors declare that they have no competing interests.

Authors' contributions

ZT and YG conceived and conducted the study design, and drafted the manuscript; YG performed data analysis; SL, JZ, JJ reviewed, edited, and revised the manuscript. All authors read and approved the final manuscript.

Acknowledgements

We thank the Beijing Public Security Bureau for providing data on coronary heart disease mortality, and China Meteorological Data Sharing Service System for providing data on weather conditions.

The study was supported by National Nature Science Foundation of China (#81172745).

Author details

¹Emergency Department of Peking University Third Hospital, Beijing, China. ²School of Population health, The University of Queensland, Brisbane, Australia. ³State Key Laboratory of Environmental Criteria and Risk Assessment & Environmental Standards Institute, Chinese Research Academy of Environmental Sciences, Beijing, China. ⁴Center for Environmental and Respiratory Health Research, Institute of Health Sciences, University of Oulu, Oulu, Finland. ⁵School of Public Health and Social Work, Queensland University of Technology, Brisbane, Australia. ⁶School of Medicine, The University of Queensland, Brisbane, Australia.

Received: 4 July 2012 Accepted: 17 August 2012

Published: 21 August 2012

References

1. Kovats RS, Hajat S: Heat stress and public health: a critical review. *Annu Rev Public Health* 2008, **29**:41–55.
2. Guo Y, Jiang F, Peng L, Zhang J, Geng F, Xu J, Zhen C, Shen X, Tong S: The association between cold spells and pediatric outpatient visits for asthma in Shanghai China. *PLoS One* 2012, **7**:e42232.
3. WHO: *Protecting health from climate change: World health day 2008*. World Health Organization: Geneva; 2008.
4. Ngian GS, Sahhar J, Proudman SM, Stevens W, Wicks IP, Van Doornum S: Prevalence of coronary heart disease and cardiovascular risk factors in a national cross-sectional cohort study of systemic sclerosis. *Ann Rheum Dis* 2012, doi:10.1136/annrheumdis-2011-201176.
5. Cademartiri F, Romano M, Seitun S, Maffei E, Palumbo A, Fusaro M, Aldrovandi A, Messalli G, Tresoldi S, Malago R, et al: Prevalence and characteristics of coronary artery disease in a population with suspected ischemic heart disease using CT coronary angiography: correlations with cardiovascular risk factors and clinical presentation. *La Radiologia medica* 2008, **113**:363–372.
6. Tatsanavivat P, Klungboonkrong V, Chirawatkul A, Bhuripanyo K, Manmontri A, Chitanondh H, Yipintsoi T: Prevalence of coronary heart disease and major cardiovascular risk factors in Thailand. *Int J Epidemiol* 1998, **27**:405–409.
7. Zhang XH, Lu ZL, Liu L: Coronary heart disease in China. *Heart* 2008, **94**:1126–1131.

8. Wu Z, Yao C, Zhao D, Wu G, Wang W, Liu J, Zeng Z, Wu Y: Sino-MONICA project: a collaborative study on trends and determinants in cardiovascular diseases in China, part i: morbidity and mortality monitoring. *Circulation* 2001, **103**:462–468.
9. Dominici F, McDermott A, Zeger SL, Samet JM: On the use of generalized additive models in time-series studies of air pollution and health. *Am J Epidemiol* 2002, **156**:193–203.
10. Kim S, Jang JY: Temperature and summer mortality association in Seoul. *Epidemiology* 2005, **16**:S112–S112.
11. Revich B, Shaposhnikov D: Temperature-induced excess mortality in Moscow, Russia. *Int J Biometeorol* 2008, **52**:367–374.
12. El-Zein A, Tewfel-Salem M, Nehme G: A time-series analysis of mortality and air temperature in greater beirut. *Sci Total Environ* 2004, **330**:71–80.
13. Guo Y, Tong S, Zhang Y, Barnett AG, Jia Y, Pan X: The relationship between particulate air pollution and emergency hospital visits for hypertension in Beijing, China. *Sci Total Environ* 2010, **408**:4446–4450.
14. Guo Y, Tong S, Li S, Barnett AG, Yu W, Zhang Y, Pan X: Gaseous air pollution and emergency hospital visits for hypertension in Beijing, China: a time-stratified case-crossover study. *Environ Health* 2010, **9**:57.
15. Barnett AG, Dobson AJ: *Analysing seasonal health data*. Berlin, Heidelberg: Springer; 2010.
16. Barry SC, Welsh A: Generalized additive modelling and zero inflated count data. *Ecol Model* 2002, **157**:179–188.
17. Anderson G, Bell M: Weather-related mortality: how heat, cold, and heat waves affect mortality in the United States. *Epidemiology* 2009, **20**:205–213.
18. Guo Y, Barnett AG, Pan X, Yu W, Tong S: The impact of temperature on mortality in Tianjin, China: a case-crossover design with a distributed lag nonlinear model. *Environ Health Perspect* 2011, **119**:1719–1725.
19. Armstrong B: Models for the relationship between ambient temperature and daily mortality. *Epidemiology* 2006, **17**:624–631.
20. Gasparrini A, Armstrong B, Kenward MG: Distributed lag non-linear models. *Stat Med* 2010, **29**:2224–2234.
21. Tong S, Wang XY, Guo Y: Assessing the short-term effects of heatwaves on mortality and morbidity in Brisbane, Australia: comparison of case-crossover and time series analyses. *PLoS One* 2012, **7**:e37500.
22. Guo Y, Barnett AG, Zhang Y, Tong S, Yu W, Pan X: The short-term effect of air pollution on cardiovascular mortality in Tianjin, China: comparison of time series and case-crossover analyses. *Sci Total Environ* 2010, **409**:300–306.
23. Maclure M: The case-crossover design: a method for studying transient effects on the risk of acute events. *Am J Epidemiol* 1991, **133**:144–153.
24. Basu R: High ambient temperature and mortality: a review of epidemiologic studies from 2001 to 2008. *Environ Health* 2009, **8**:40.
25. Guo Y, Jia Y, Pan X, Liu L, Wichmann H: The association between fine particulate air pollution and hospital emergency room visits for cardiovascular diseases in Beijing, China. *Sci Total Environ* 2009, **407**:4826–4830.
26. Janes H, Sheppard L, Lumley T: Overlap bias in the case-crossover design, with application to air pollution exposures. *Stat Med* 2005, **24**:285–300.
27. Lu Y, Zeger SL: On the equivalence of case-crossover and time series methods in environmental epidemiology. *Biostatistics* 2007, **8**:337–344.
28. Lu Y, Symons JM, Geyh AS, Zeger SL: An approach to checking case-crossover analyses based on equivalence with time-series methods. *Epidemiology* 2008, **19**:169–175.
29. Kunst AE, Looman CW, Mackenbach JP: Outdoor air temperature and mortality in The Netherlands: a time-series analysis. *Am J Epidemiol* 1993, **137**:331–341.
30. Danet S, Richard F, Montaye M, Beauchant S, Lemaire B, Graux C, Cottel D, Marecaux N, Amouyel P: Unhealthy effects of atmospheric temperature and pressure on the occurrence of myocardial infarction and coronary deaths. A 10-year survey: the lille-World health organization MONICA project (monitoring trends and determinants in cardiovascular disease). *Circulation* 1999, **100**:E1–E7.
31. Basu R, Samet JM: Relation between elevated ambient temperature and mortality: a review of the epidemiologic evidence. *Epidemiol Rev* 2002, **24**:190–202.
32. Pan WH, Li LA, Tsai MJ: Temperature extremes and mortality from coronary heart disease and cerebral infarction in elderly Chinese. *Lancet* 1995, **345**:353–355.
33. Muggeo VM, Hajat S: Modelling the non-linear multiple-lag effects of ambient temperature on mortality in Santiago and Palermo: a constrained segmented distributed lag approach. *Br Med J* 2009, **66**:584–591.
34. Liu L, Breitner S, Pan X, Franck U, Leitte AM, Wiedensohler A, von KS, Wichmann HE, Peters A, Schneider A: Associations between air temperature and cardio-respiratory mortality in the urban area of Beijing, China: a time-series analysis. *Environ Health* 2011, **10**:51.
35. Ma W, Yang C, Chu C, Li T, Tan J, Kan H: The impact of the 2008 cold spell on mortality in Shanghai, China. *Int J Biometeorol* 2012, doi:10.1007/s00484-012-0545-7.
36. Carder M, McNamee R, Beverland I, Elton R, Cohen GR, Boyd J, Agius RM: The lagged effect of cold temperature and wind chill on cardiorespiratory mortality in Scotland. *Occup Environ Med* 2005, **62**:702–710.
37. Ballester F, Corella D, Perez-Hoyos S, Saez M, Hervas A: Mortality as a function of temperature, a study in Valencia, Spain, 1991–1993. *Int J Epidemiol* 1997, **26**:551–561.
38. Bouchama A, Knochel JP: Heat stroke. *N Engl J Med* 2002, **346**:1978–1988.
39. McGeehin M, Mirabelli M: The potential impacts of climate variability and change on temperature-related morbidity and mortality in the United States. *Environ Health Perspect* 2001, **109**:185–189.
40. Bull GM, Morton J: Relationships of temperature with death rates from all causes and from certain respiratory and arteriosclerotic diseases in different age groups. *Age Ageing* 1975, **4**:232–246.
41. Guo Y, Punnasiri K, Tong S: Effects of temperature on mortality in Chiang Mai city, Thailand: a time series study. *Environ Health* 2012, **11**:36.
42. Yu W, Mengersen K, Wang X, Ye X, Guo Y, Pan X, Tong S: Daily average temperature and mortality among the elderly: a meta-analysis and systematic review of epidemiological evidence. *Int J Biometeorol* 2011, **56**:569–581.
43. Collins KJ: Effects of cold on old people. *British Journal Hospital Medicine* 1987, **38**:506.
44. Schwartz J: Who is sensitive to extremes of temperature?: a case-only analysis. *Epidemiology* 2005, **16**:67–72.
45. Douglas AS, Dunnigan MG, Allan TM, Rawles JM: Seasonal variation in coronary heart disease in Scotland. *J Epidemiol Community Health* 1995, **49**:575–582.

doi:10.1186/1476-069X-11-56

Cite this article as: Tian et al.: Ambient temperature and coronary heart disease mortality in Beijing, China: a time series study. *Environmental Health* 2012 **11**:56.

Submit your next manuscript to BioMed Central and take full advantage of:

- Convenient online submission
- Thorough peer review
- No space constraints or color figure charges
- Immediate publication on acceptance
- Inclusion in PubMed, CAS, Scopus and Google Scholar
- Research which is freely available for redistribution

Submit your manuscript at
www.biomedcentral.com/submit

